

GENERAL ARRANGEMENT

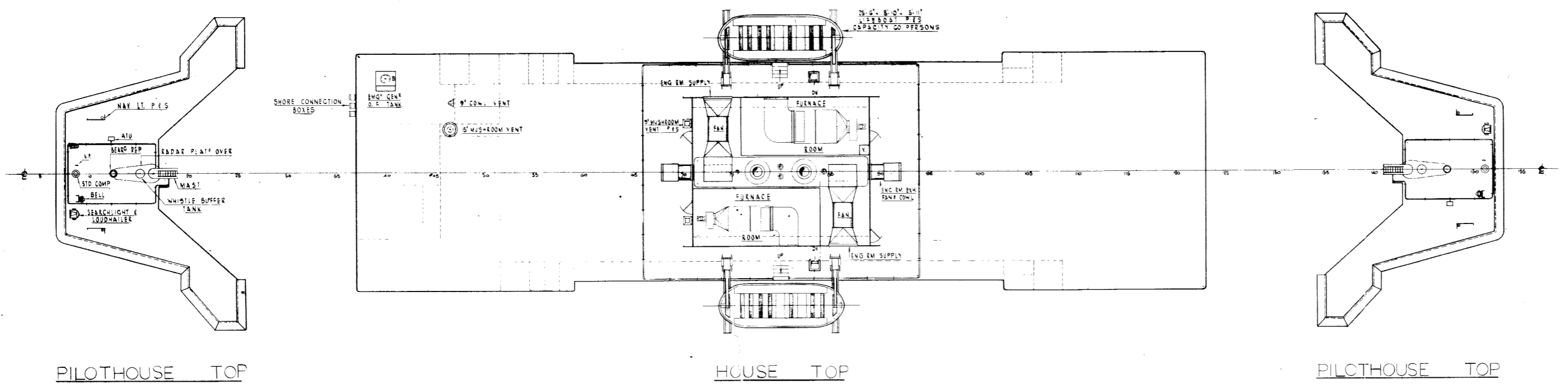
HULL No 53/54
 BUILT BY
 PORT WELER DRY DOCKS LTD.
 ST. CATHARINES ONTARIO

PRINCIPAL DIMENSIONS

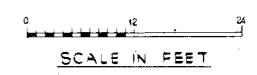
LENGTH OVERALL	326'-11"
LENGTH B.P.	317'-0"
BREADTH O.A. (INCL. FENDERS)	68'-0"
BREADTH MOULDED	67'-0"
DRAFT	16'-6"
DEPTH (MLD TO MAIN DK)	23'-3"

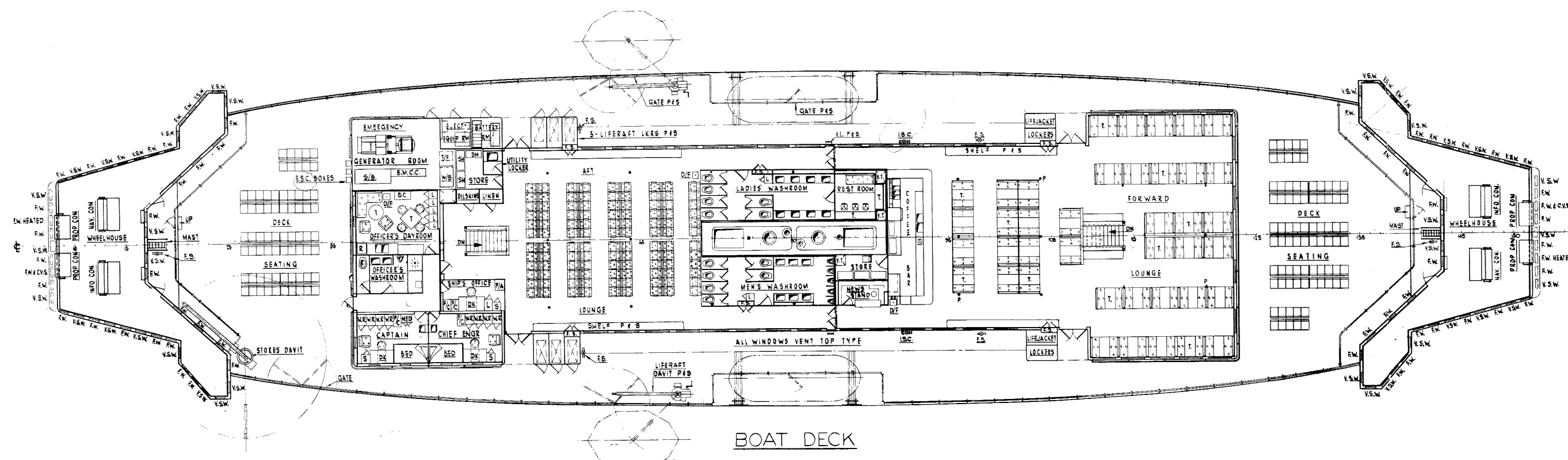
ABBREVIATIONS

- A.P. AIR PIPE
- A.P. AFT PERPENDICULAR
- F.P. FORD PERPENDICULAR
- A.T.U. AUTOMATIC TUNING UNIT
- V. VENT
- V.L. VERTICAL LADDER
- V.P. VOICE PIPE
- N.U.C. NOT UNDER COMMAND
- O.T.F. OIL TIGHT FLOOR
- W.T.B. WATER TIGHT BULKHEAD



SHEET No 1





GENERAL ARRANGEMENT

HULL No 53/54

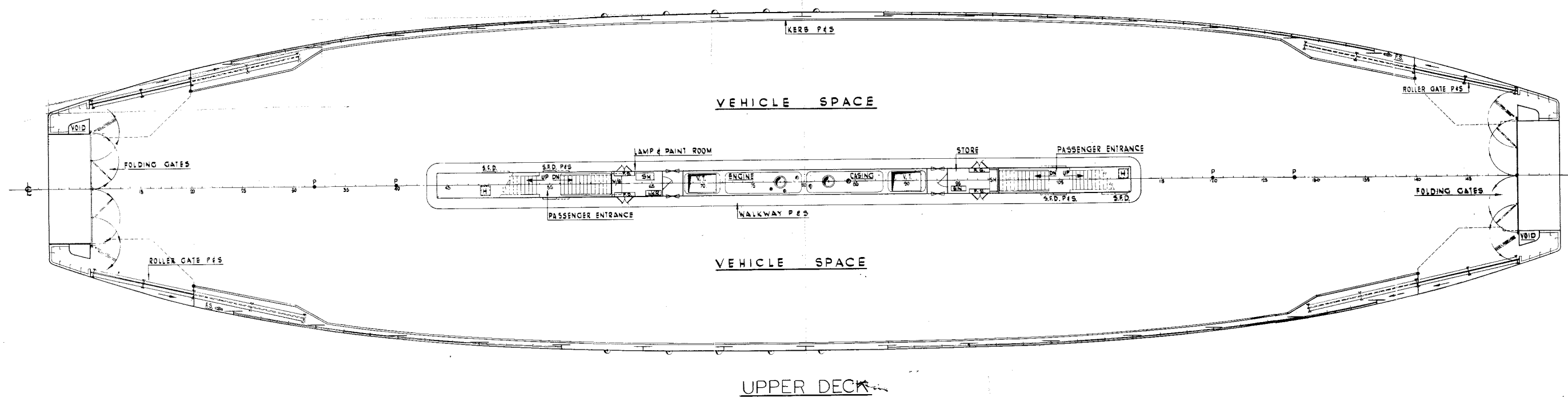
BUILT BY
PORT WELLER DRY DOCKS LTD.
ST. CATHARINES ONTARIO

PRINCIPAL DIMENSIONS

LENGTH OVERALL	325'-1 1/2"
LENGTH B.P.	317'-0"
BREADTH O.A. (INCL. FENDERS)	68'-0 1/2"
BREADTH MOULDED	67'-0"
DRAFT	16'-6"
DEPTH (MLD. TO MAIN DK.)	23'-3"

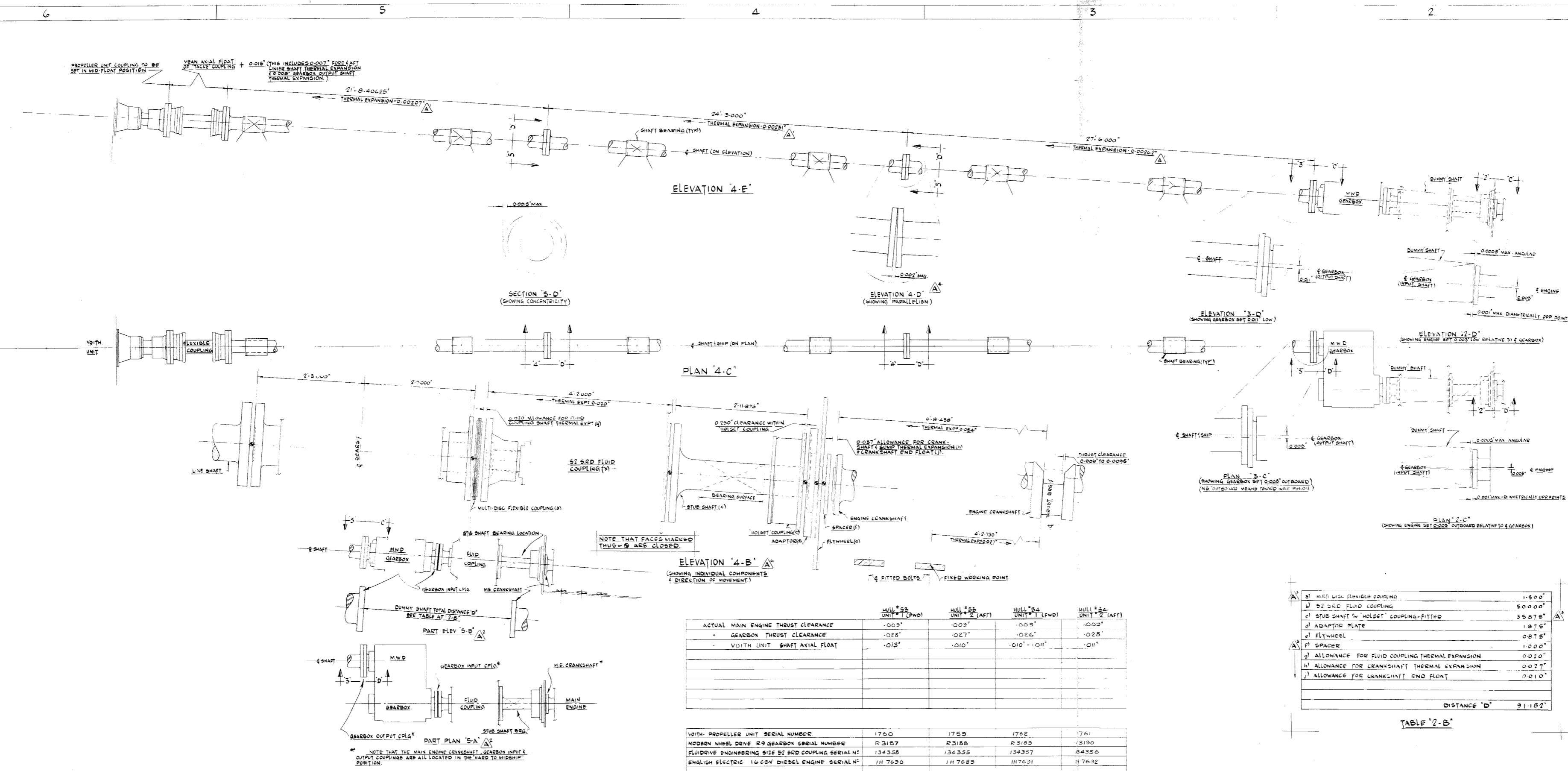
ABBREVIATIONS

- B.C. BOOKCASE
- C.V.S. CLEAR VIEW SCREEN
- DK. DESK
- D.F. DRINKING FOUNTAIN
- EM.C.C. EMERGENCY MOTOR CONTROL CENTRE
- F/C. FILING CABINET
- F.W. FIXED WINDOW
- F.S. FIRE STATION
- H. HATCH
- INFO CON. INFORMATION CONSOLE
- LO. L.V.R. LOCKER
- MED. MEDICINE LOCKER
- P. PILLAR
- P.A. PUBLIC ADDRESS SYSTEM
- T/F. TRANSFORMER
- PROP. CON. PROVISION CONSOLE
- NAV. CON. NAVIGATION CONSOLE
- R. REFRIGERATOR
- S. SAFE
- SH. SHELVES
- S.B. SWITCHBOARD
- T. TABLE
- V.T. VENT TRUNK
- V.P. VENT PLENUM
- V.L. VERTICAL LADDER
- V.S.W. VERTICAL SLIDING WINDOW
- S.F.D. SLIDING FIRE DOOR
- W.R. WARDROBE
- W.B. WORK BENCH
- I.S.C. INTERNATIONAL SHORE CONNECTION
- E.S.C. ELECTRICAL SHORE CONNECTION



SHEET No. 2

SCALE IN FEET



	HULL # 55 UNIT # 1 (FWD)	HULL # 55 UNIT # 2 (AFT)	HULL # 54 UNIT # 1 (FWD)	HULL # 54 UNIT # 2 (AFT)
ACTUAL MAIN ENGINE THRUST CLEARANCE	.003"	.003"	.003"	.003"
GEARBOX THRUST CLEARANCE	.028"	.027"	.026"	.028"
VOITH UNIT SHAFT AXIAL FLOAT	.013"	.010"	.010" - .011"	.011"

VOITH PROPELLER UNIT SERIAL NUMBER	1760	1759	1762	1761
MODERN WHEEL DRIVE R9 GEARBOX SERIAL NUMBER	R3187	R3188	R3183	R3190
FLUIDRIVE ENGINEERING SIZE 52 S2 D COUPLING SERIAL NO.	134358	134355	134357	R4356
ENGLISH ELECTRIC 16 CVL DIESEL ENGINE SERIAL NO.	1H 7620	1H 7683	1H 7621	1H 7632

TABLE "3-B"

1) MULTI DISC FLEXIBLE COUPLING	1-5 00"
2) 52 S2 D FLUID COUPLING	50-0 00"
3) STUB SHAFT "HOLSET" COUPLING-FITTED	35-8 75"
4) ADAPTOR PLATE	1-8 75"
5) FLYWHEEL	0-8 75"
6) SPACER	1-0 00"
7) ALLOWANCE FOR FLUID COUPLING THERMAL EXPANSION	0-0 20"
8) ALLOWANCE FOR CRANKSHAFT THERMAL EXPANSION	0-0 27"
9) ALLOWANCE FOR CRANKSHAFT END FLOAT	0-0 10"
TOTAL	91-1 82"

TABLE "2-B"

ALTERATIONS						REFERENCES	
REV.	ZONE	DESCRIPTION	DATE	APP.	OWNER	TITLE	DRG. No.
1	REV 4-E	ADDED INDIVIDUAL SHAFT THERMAL EXPANSIONS				"CUSTOM DIESEL" INSTRUCTIONS FOR ALIGNMENT OF MAIN MACHT FOR P.E.I. FERRIES	
2	3-A, 3-B	PART ADJUSTMENTS WERE AT JONES 3-A/B, ALSO INDICATED STUB SHAFT BEARING POSITION					
3	TABLE 2-B	(a) WAS LISTED AS FLUIDRIVE/GEARBOX FLEX COUPLING, (c)- DIMENSION WAS 36-875" ADDED SPACER (ITEM F) WAS (g) WAS (h) WAS (i) WAS (j) WAS (k)					
4	DETAIL 4-D	ADDED TABLE "3-B" ON TOP					
5	"3-B"	ADDED TABLE "3-B"					
6	"4-B"	ADDED ELEVATION "4-B"					

RESERVATIONS			
NO.	DESCRIPTION	DATE	BY

PRINT ISSUE			
GROUP	NO.	DATE	REVISION
OWNER			
DESIGNER			
A.B.S.			
R.B.D.			
L.S.D.			
PROD. MGR.			
STEEL SHOP			
DRY DOCK			
ENG. SUPV.			
DRY DOCK			
LOFT			
MACHINE SHOP			
CARPENTER			
PAINTER			
RIGGER			
REPAIR			
WELDER			
WELDING			
ELECT. WIRE CONT.			
DRY DOCK			
SHIP SUB. CONT.			
SHIP SUB. CONT.			
TOTAL			

APPROVALS			
OWNER	DESIGNER	A.B.S.	C.S.I.

DRG. No. 53454-M-51. ALT. "A"

GENERAL NOTES

- AFTER ALIGNMENT OF ENGINE (GEARBOX, AN EXTRA 0.005" ALLOWANCE TO BE ADDED TO STUBSHAFT BEARING CHECKS FINISHED TO GATE FOR THERMAL GROWTH OF ENGINE (GEARBOX IN HOT CONDITION).
- THIS DRAWING IS TO BE USED IN CONJUNCTION WITH THE PROCEDURES OUTLINED IN REF #1.
- USING INDICATOR GAUGE, VERIFY GEARBOX & ENGINE THRUST PAD CLEARANCE.

ALIGNMENT OF MAIN MACHT FOR P.E.I. FERRIES

SCALE: NONE. A.S.P. 2000

HULL No. 53454

DRAWN BY: W. SPENCE. DATE: 25th DEC 1970

APPROVED BY: *[Signature]*

PORT WELLER DRY DOCKS LTD. ST. CATHARINES ONTARIO